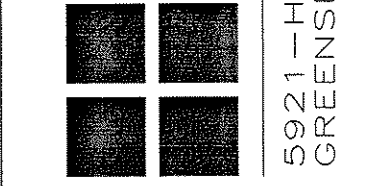


Alamance Consulting Engineers

961-F Burlington Ave.
Gibsonville, N.C. 27249
Phone: (336) 449-4558
Fax: (336) 449-5732

BRADLEY & BAIL ARCHITECTS

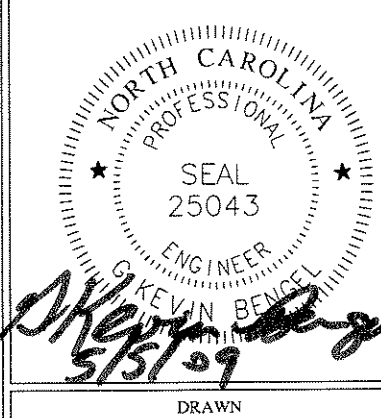


5921-H WEST FRIENDLY AVE
GREENSBORO, N.C. 27410

BLUE RIDGE PROJECT NUMBER 071-04A-NC
LEGACY AT CAROLINA FOREST
"A" BUILDING-1/2/3 BEDROOM APT.
JACKSONVILLE TOWNSHIP
JACKSONVILLE, NC

BLUE RIDGE PROJECT NUMBER 071-04A-NC
LEGACY AT CAROLINA FOREST
"A" BUILDING-1/2/3 BEDROOM APT.
JACKSONVILLE TOWNSHIP
JACKSONVILLE, NC

DRAWING NAME
1ST FLOOR FIRE ALARM PLAN



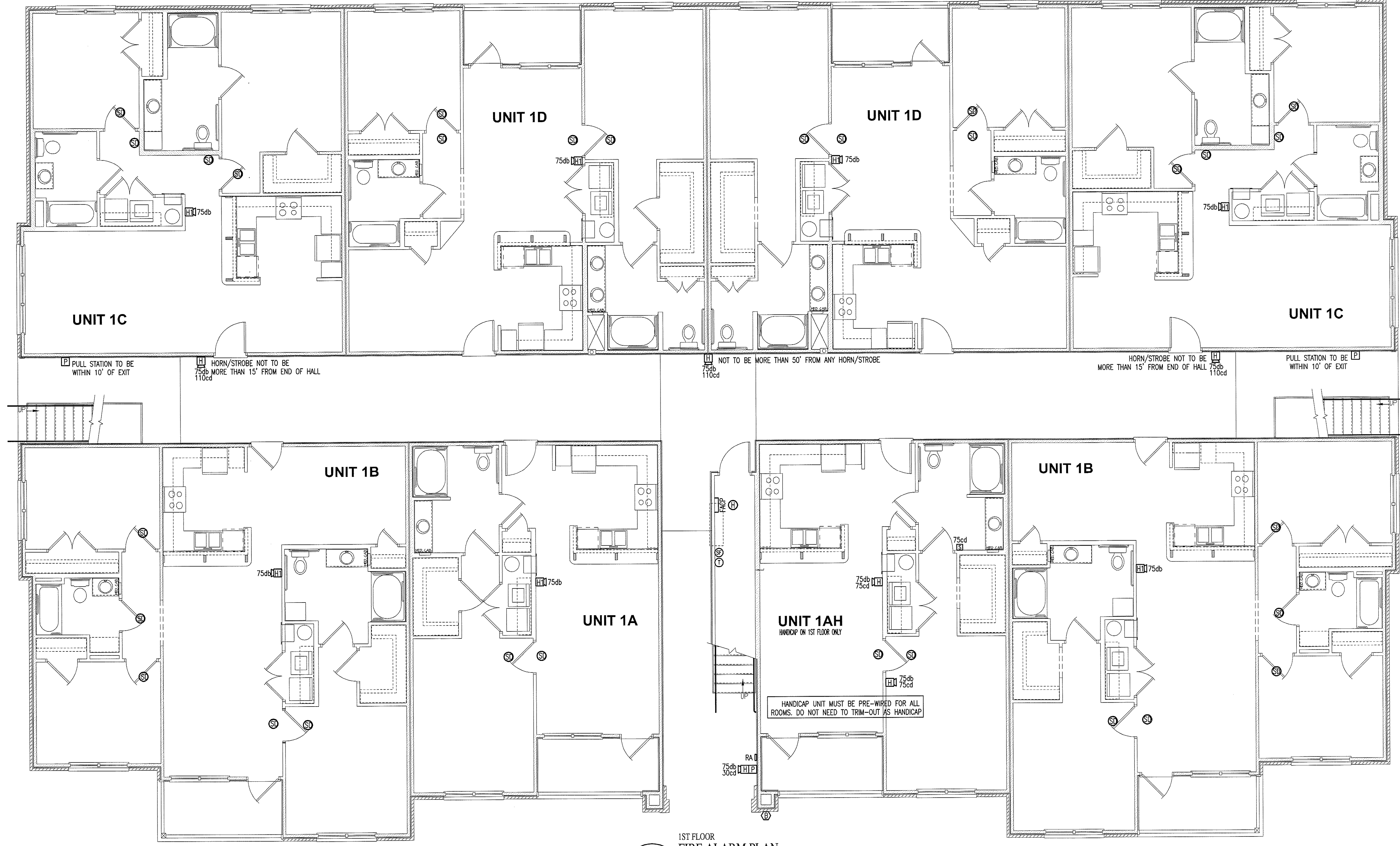
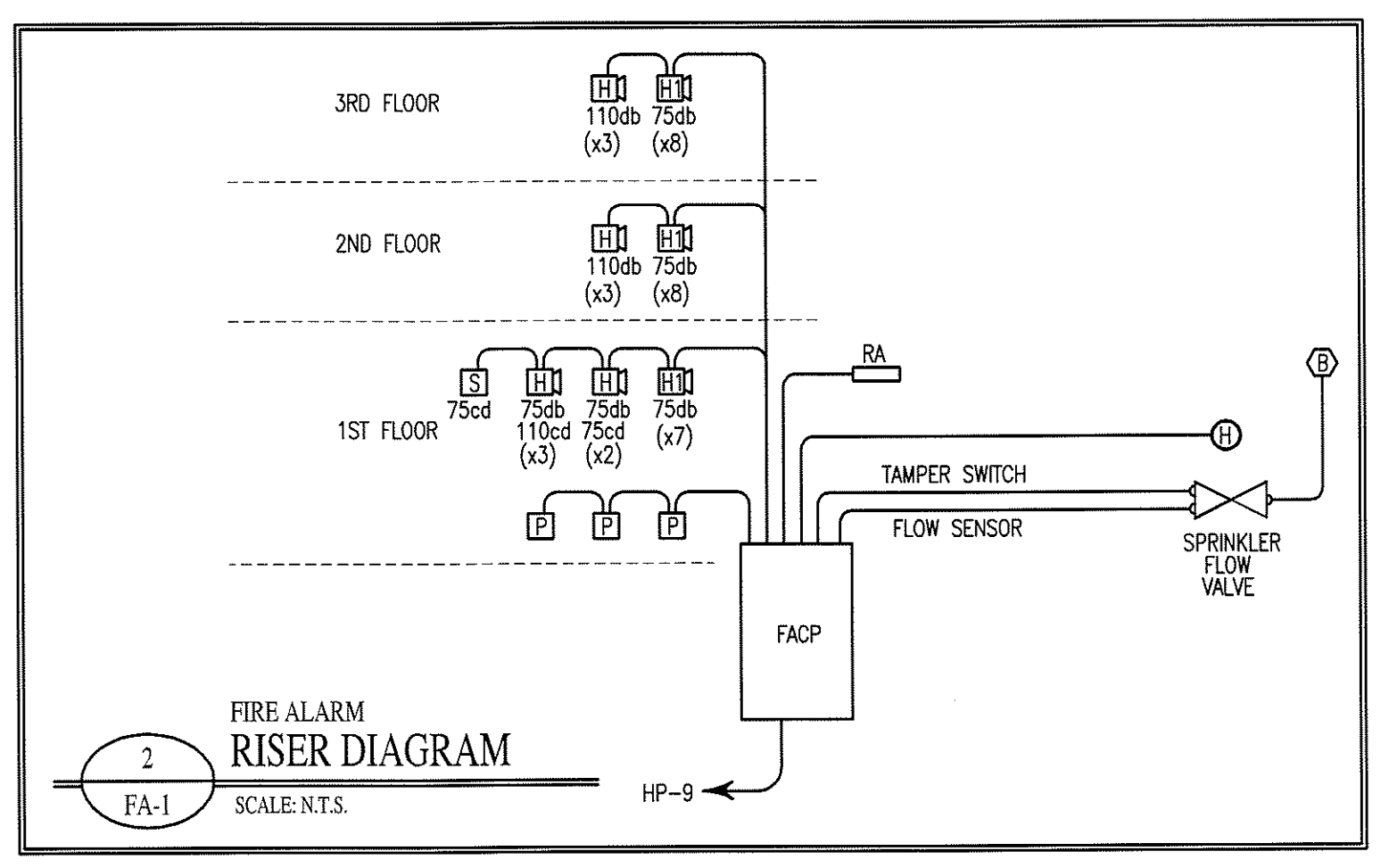
DRAWN
CCM
DATE
5/5/09
SCALE
AS NOTED
JOB NO.
9006
SHEET

FA-1

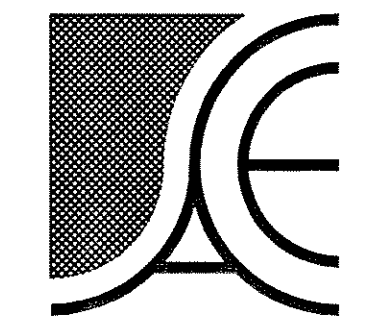
FIRE ALARM LEGEND			
SYMBOL	DESCRIPTION	MANUFACTURER	MODEL
FACP	FIRE ALARM CONTROL PANEL	INTELLIKNIGHT	1st BUILDING OR CLUBHOUSE (5808) ADDITIONAL BUILDINGS (5208)
P	FIRE ALARM MANUAL PULL STATION MOUNT 48" A.F.F.	FIRE LITE ALARMS	BG-12
H 75db XXcd	FIRE ALARM HORN/STROBE XX=CANDELLA LEVEL	SYSTEM SENSOR	P1224MC
B	SPRINKLER BELL	POTTER	PDA
RA	REMOTE ANNUNCIATOR	INTELLIKNIGHT	5235
H 75db	FIRE ALARM HORN	SYSTEM SENSOR	PA400W
S 15cd	STROBE LIGHT XX=CANDELLA LEVEL	SYSTEM SENSOR	S1224MC
H	HEAT DETECTOR	CHEMETRONICS	600
SF	SPRINKLER FLOW VALVE	POTTER	VSR-SS
T	TAMPER VALVE	-	-
SD	120 V. SMOKE DETECTOR (INSTALLED BY ELECTRICAL CONTRACTOR)	FIREX	FADC

FIRE ALARM NOTES:

1. ALL FIRE ALARM COMPONENTS SHALL BE UL APPROVED AND IN COMPLIANCE WITH ALL APPLICABLE NFPA STANDARDS.
2. FIRE ALARM CONTROL PANEL TO BE EQUIPPED WITH A BATTERY BACKUP.
3. SEE NOTE E-2 FOR GENERAL ELECTRICAL NOTES.



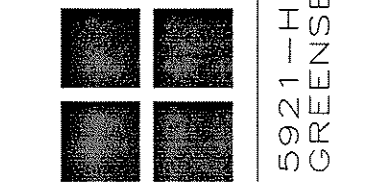
1
FA-1
1ST FLOOR
FIRE ALARM PLAN
SCALE: 3/16" = 1'-0"



Alamance Consulting Engineers

961-F Burlington Ave.
Gibsonville, N.C. 27249
Phone: (336) 449-4558
Fax: (336) 449-5732

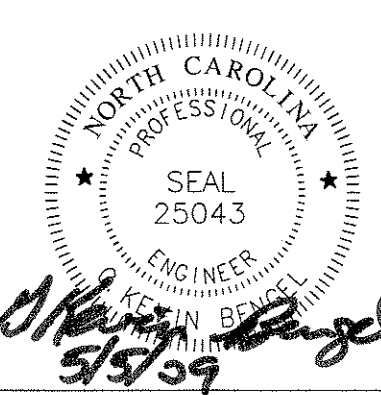
BRADLEY & BALL ARCHITECTS



5921-H WEST FRIENDLY AVE
GREENSBORO, N.C. 27410

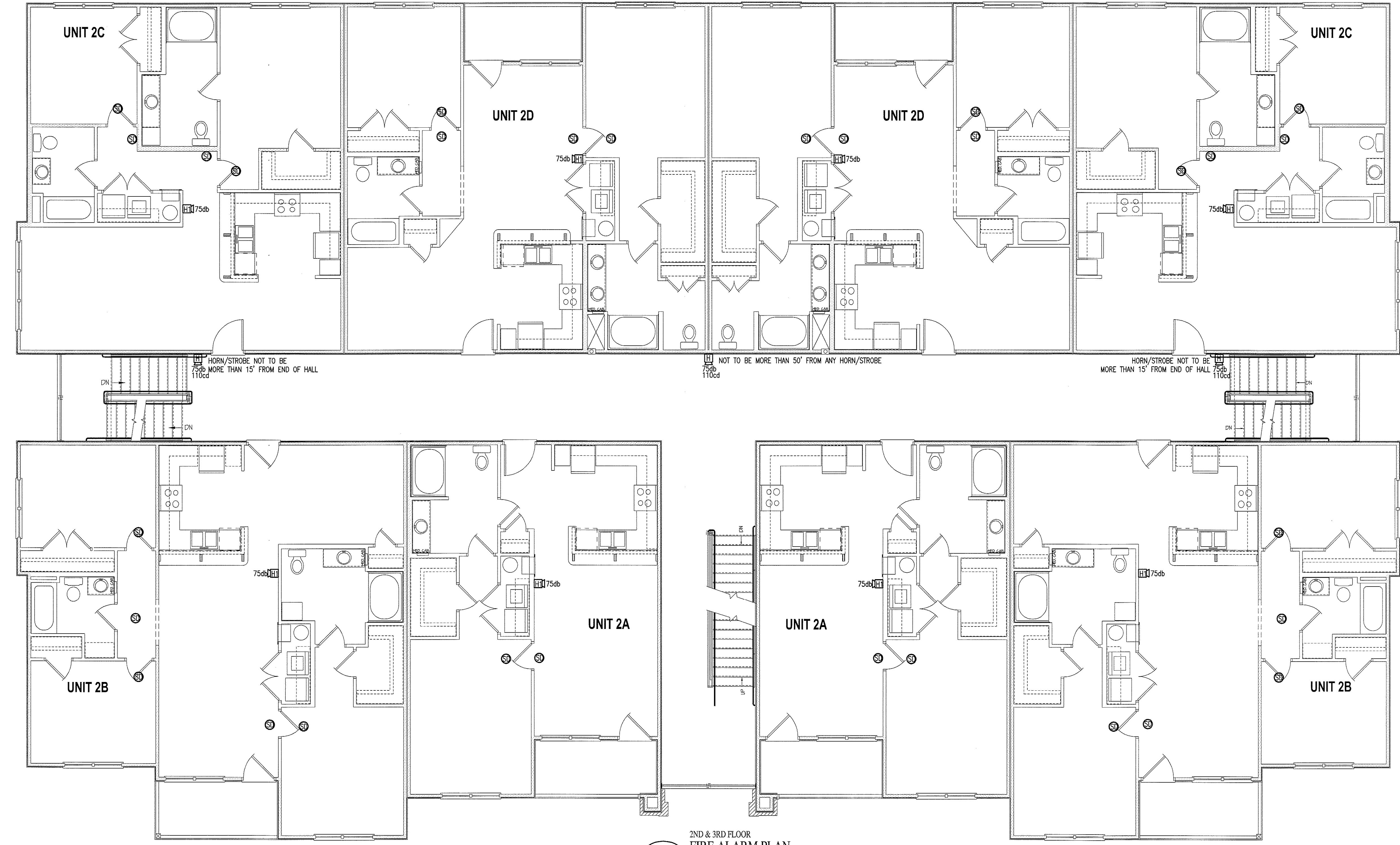
BLUE RIDGE PROJECT NUMBER 071-044-NC
LEGACY AT CAROLINA FOREST
"A" BUILDING-1/2/3 BEDROOM APT.
JACKSONVILLE TOWNSHIP JACKSONVILLE, NC

DRAWING NAME
2ND & 3RD FLOOR FIRE ALARM PLAN



DRAWN: CCM
DATE: 5/5/09
SCALE: AS NOTED
FOR NO.: 9006
SHEET

FA-2



1
FA-2
2ND & 3RD FLOOR FIRE ALARM PLAN
SCALE: 3/16" = 1'-0"