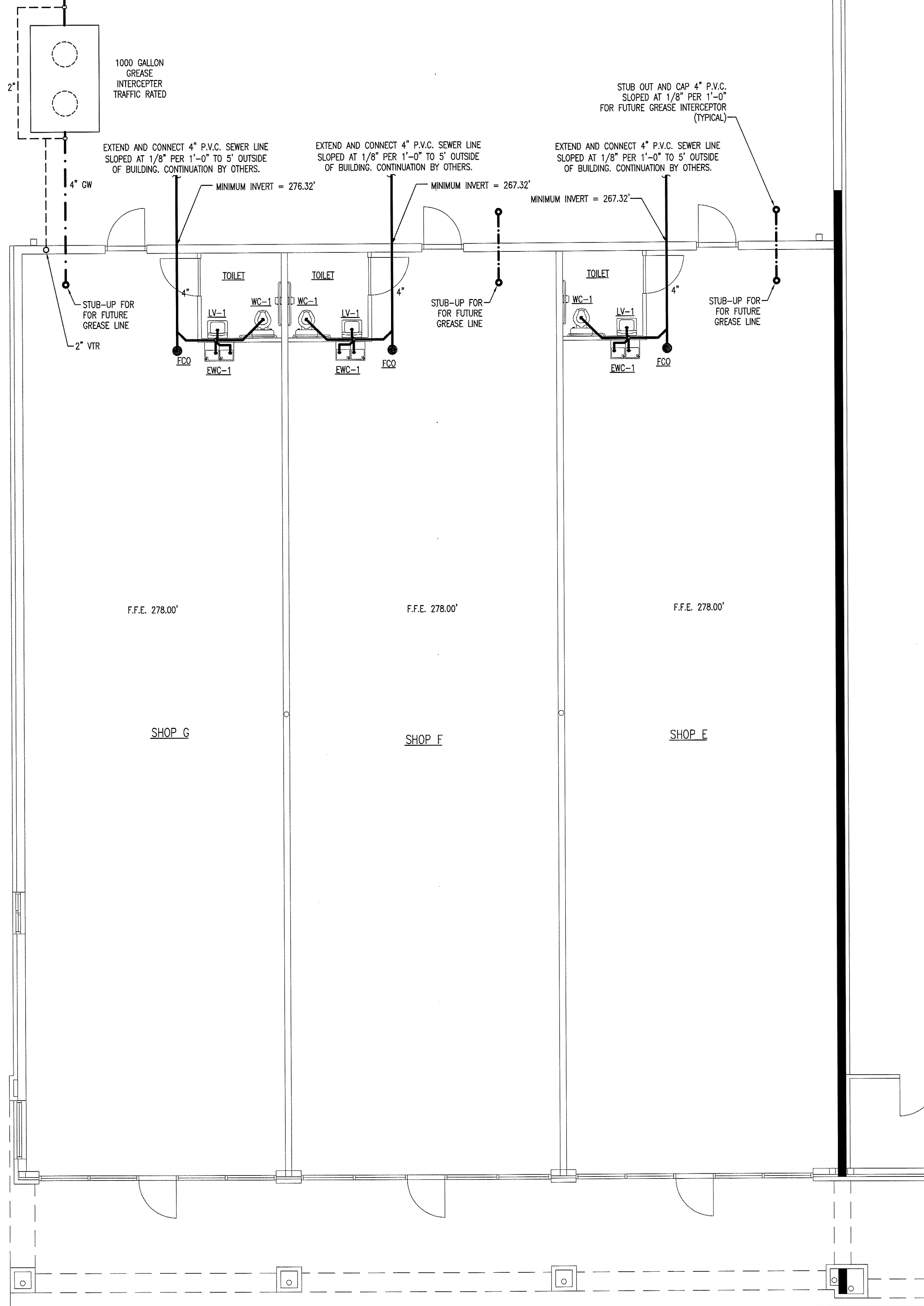


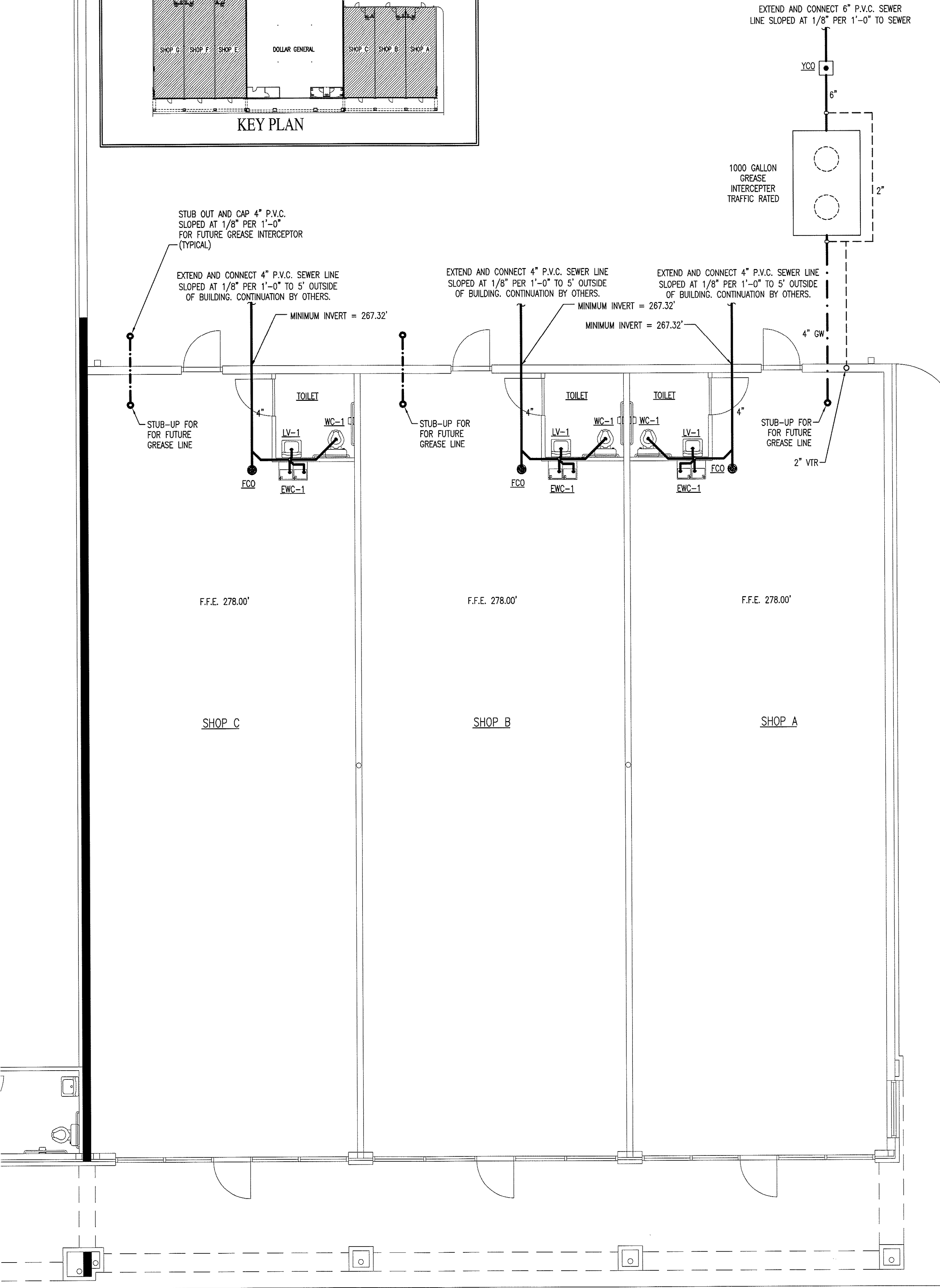
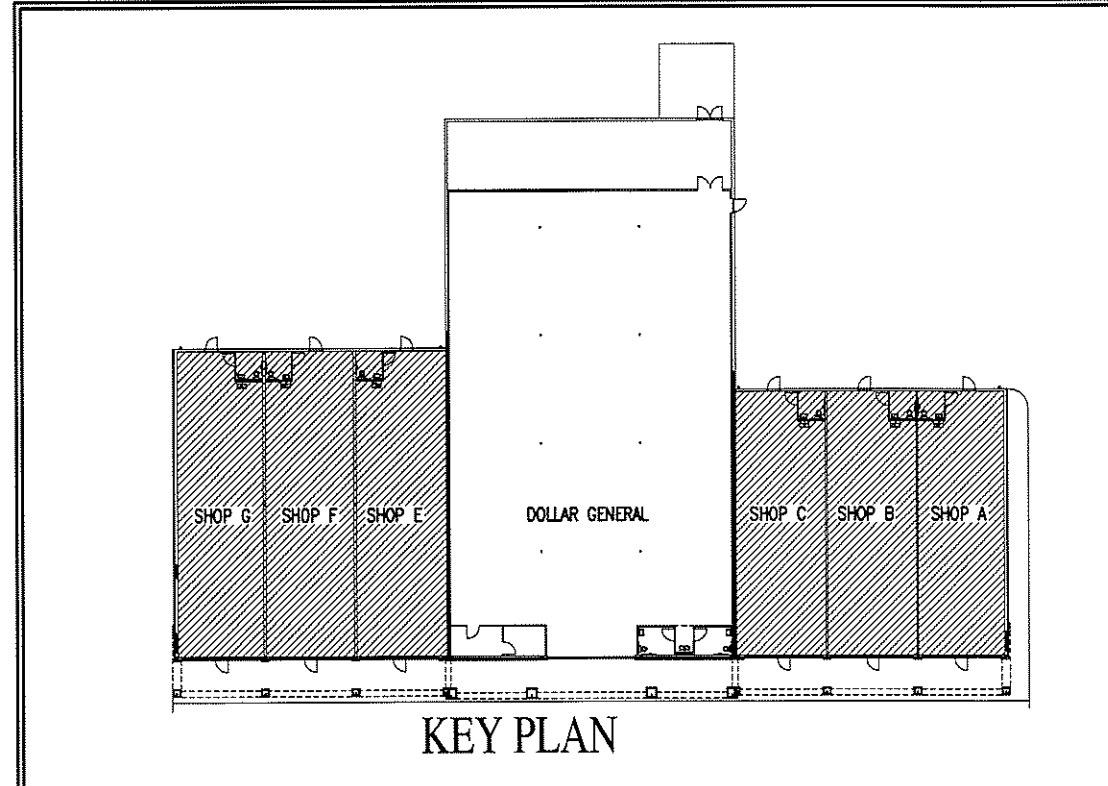
EXTEND AND CONNECT 6" P.V.C. SEWER LINE SLOPED AT 1/8" PER 1'-0" TO SEWER

WALL LEGEND	
	3-HOUR RATED FIRE WALL

PIPING LEGEND	
	SEWER PIPING
	VENT PIPING
	GREASE PIPING

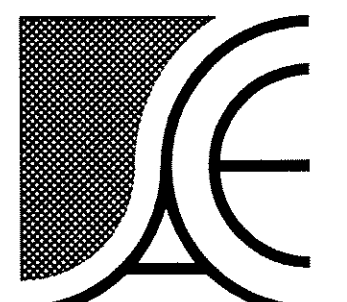


2 SHOPS E-G PLUMBING PLAN SCALE: 3/16" = 1'-0" P-1



1 SHOPS A-C PLUMBING PLAN SCALE: 3/16" = 1'-0" P-1

Copyright © 2009 Alamance Consulting Engineers, P.A. All Rights Reserved. No part of these plans may be copied, reproduced or reused in any way without the express written permission of Alamance Consulting Engineers, P.A.

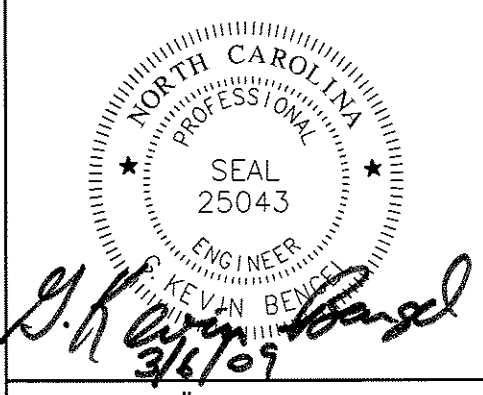


Alamance Consulting Engineers

961-F Burlington Avenue
Gibsonville, N.C. 27249
Phone: (336) 449-4558
Fax: (336) 449-5732

SOUTHRIDGE MARKET
5416 ROCK QUARRY ROAD
RALEIGH, NORTH CAROLINA
ASHLAND CONSTRUCTION COMPANY

issue date:
4 MAR 2009 - FOR PERMITS



ACE Job # 9018
project 10021.00
dwg. by EDM
ckd. by MK

content
RETAIL SHOPS
PLUMBING
PLAN

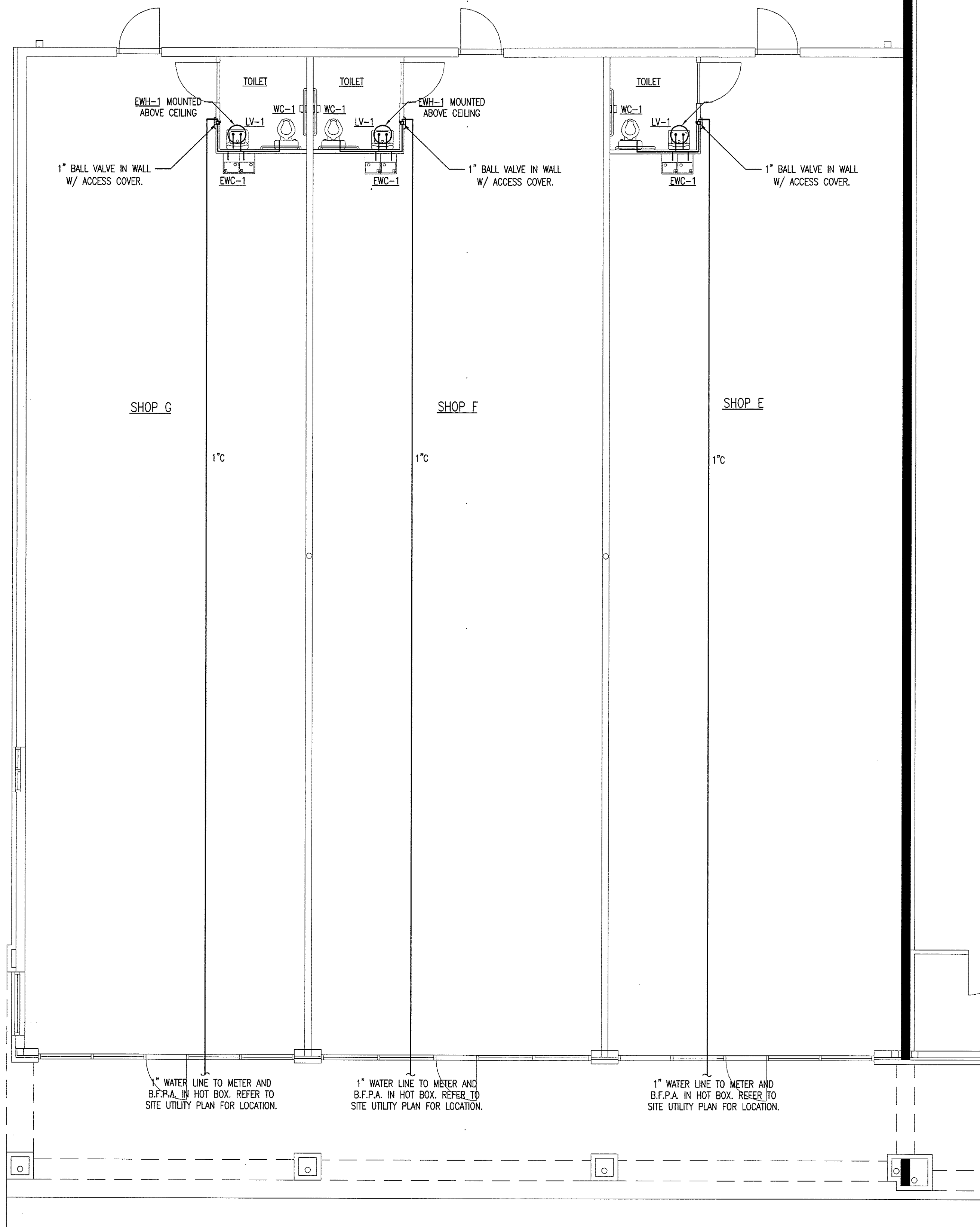
FOR CONSTRUCTION
sheet

P-1

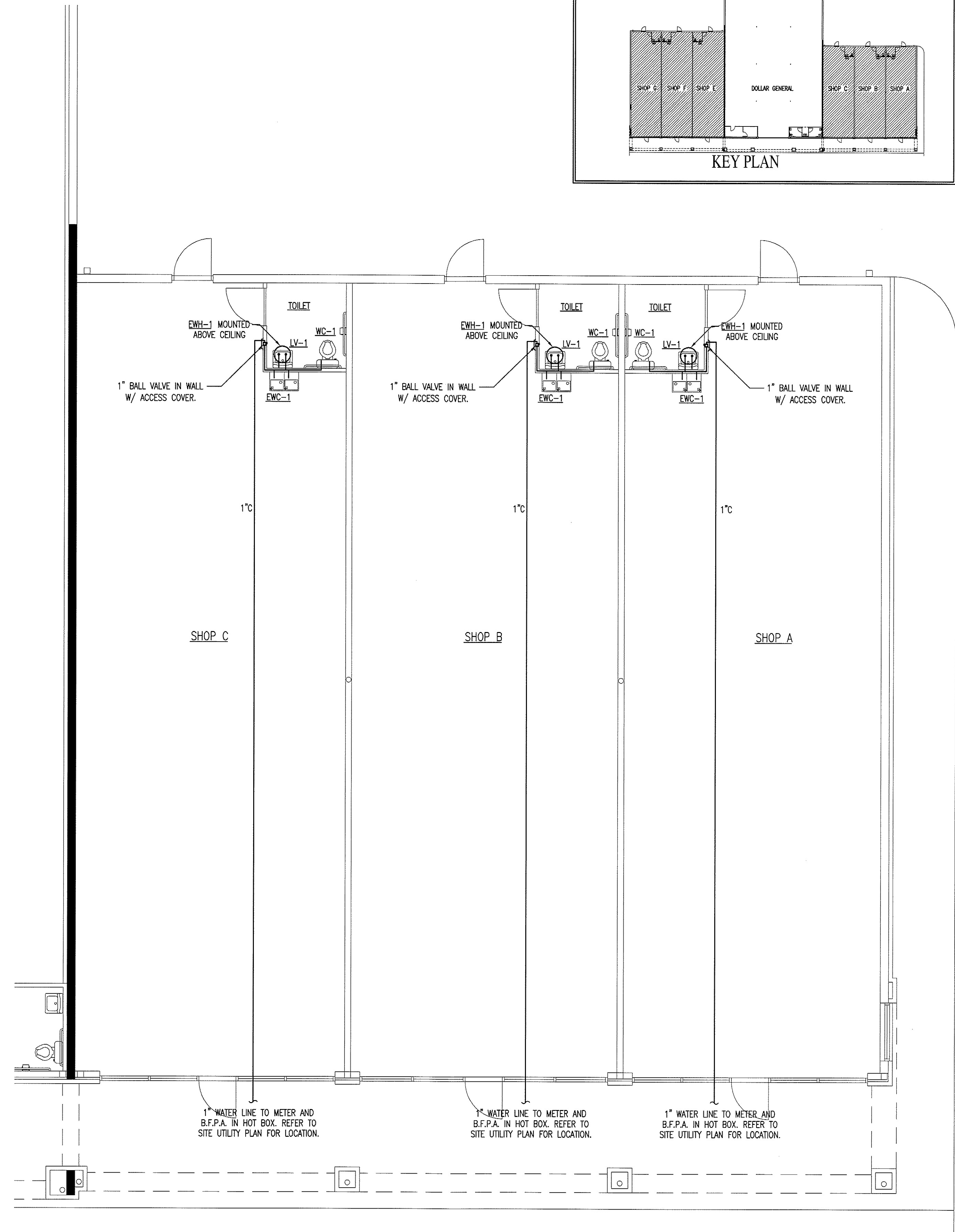
1 of 3

WALL LEGEND	
	3-HOUR RATED FIRE WALL

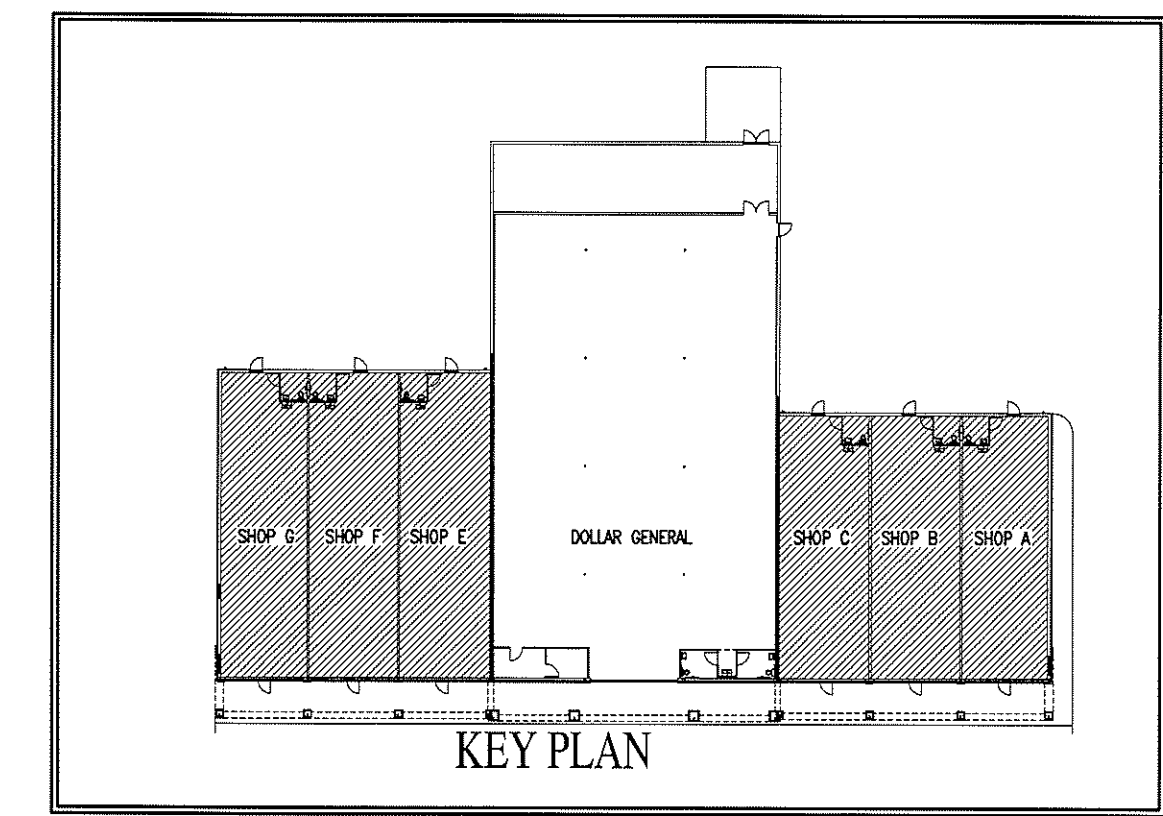
PIPING LEGEND	
SYMBOL	DESCRIPTION
	HOT WATER
	COLD WATER



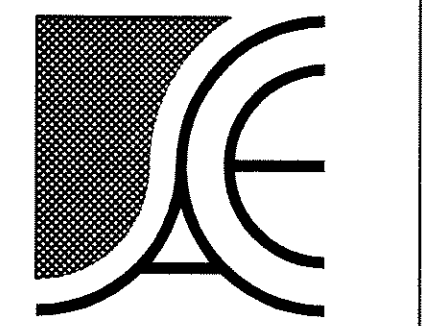
SHOPS E-G
WATER PIPING PLAN
 2
 P-2 SCALE: 3/16" = 1'-0"



SHOPS A-C
WATER PIPING PLAN
 1
 P-2 SCALE: 3/16" = 1'-0"



Copyright © 2009 Alamance Consulting Engineers, P.A. All Rights Reserved. No part of these plans may be copied, reproduced or used in any way without the express written permission of Alamance Consulting Engineers, P.A.

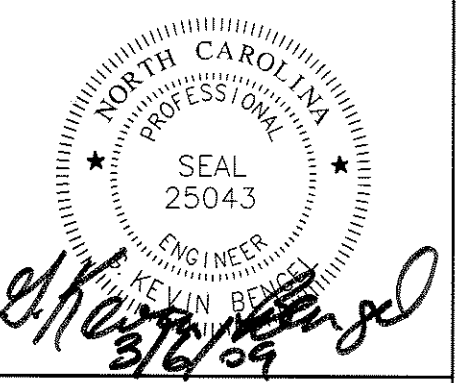


Alamance Consulting Engineers

961-F Burlington Avenue
 Gibsonville, N.C. 27249
 Phone: (336) 449-4558
 Fax: (336) 449-5732

SOUTHRIDGE MARKET
 5416 ROCK QUARRY ROAD
 RALEIGH, NORTH CAROLINA
 ASHLAND CONSTRUCTION COMPANY

issue date:
4 MAR 2009 - FOR PERMITS

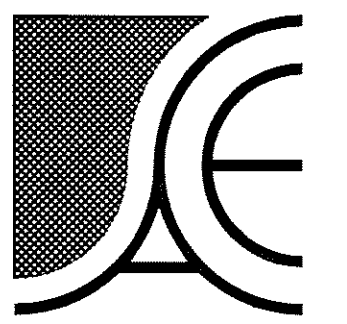


ACE Job # 9018
 project 1082100
 dwg. by EDM
 ckd. by JPK

content
 RETAIL SHOPS
 WATER PIPING
 PLAN

FOR CONSTRUCTION
 sheet

P-2

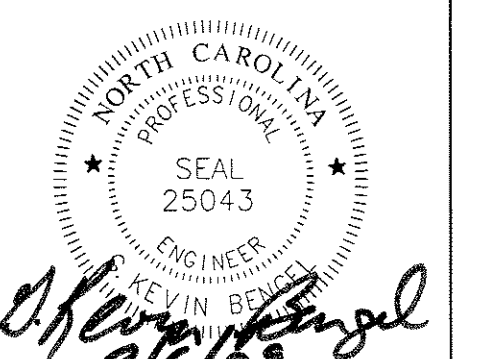


Alamance Consulting Engineers

961-F Burlington Avenue
Gibsonville, N.C. 27249
Phone: (336) 449-4558
Fax: (336) 449-5732

SOUTHRIDGE MARKET
5416 ROCK QUARRY ROAD
RALEIGH, NORTH CAROLINA
ASHLAND CONSTRUCTION COMPANY

issue date:
4 MAR 2009 - FOR PERMITS



ACE Job # 9018
project 102100
dwg. by EDM
ckd. by JMK

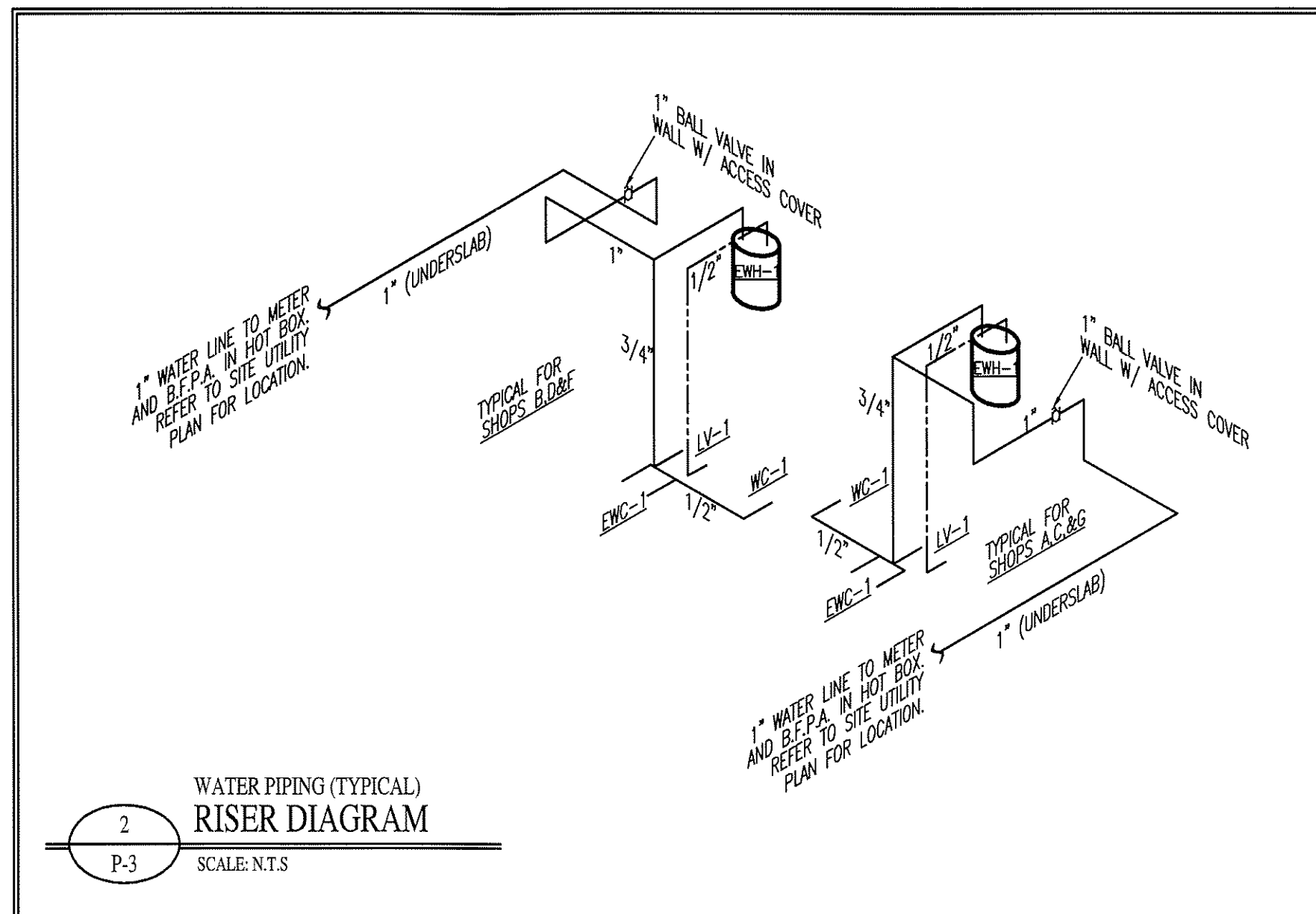
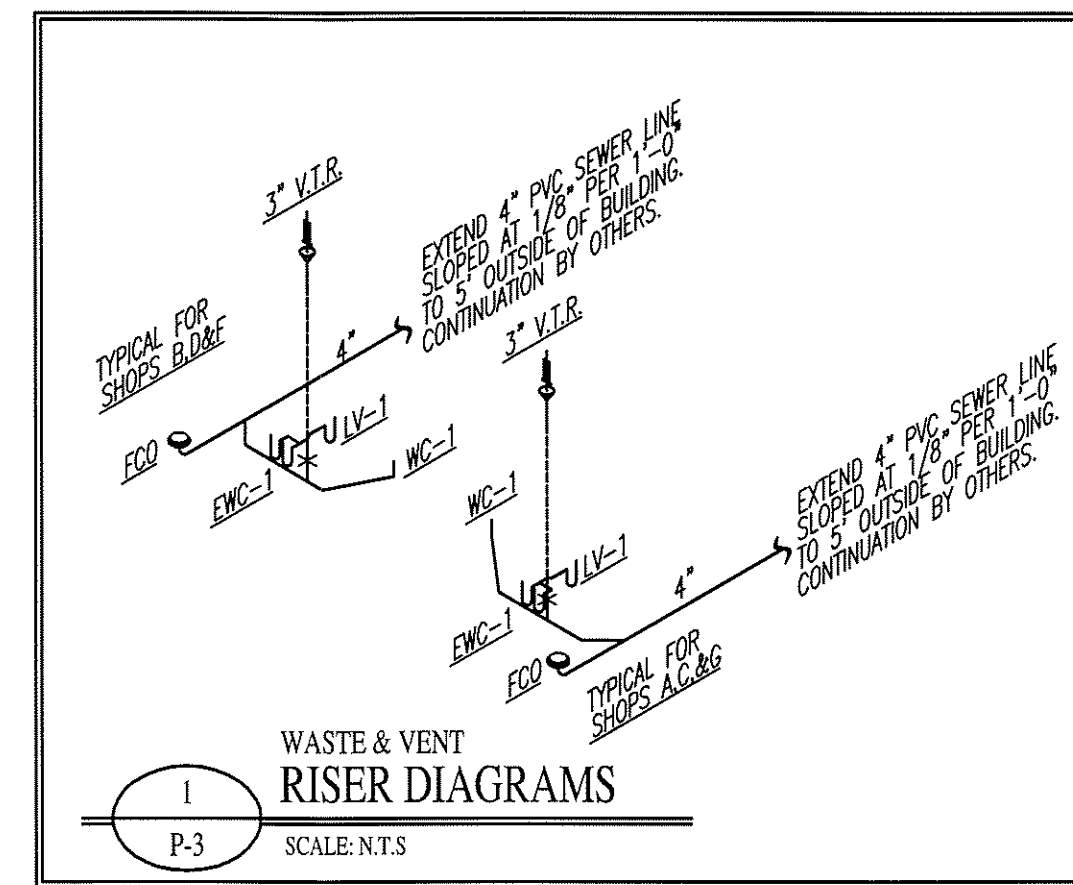
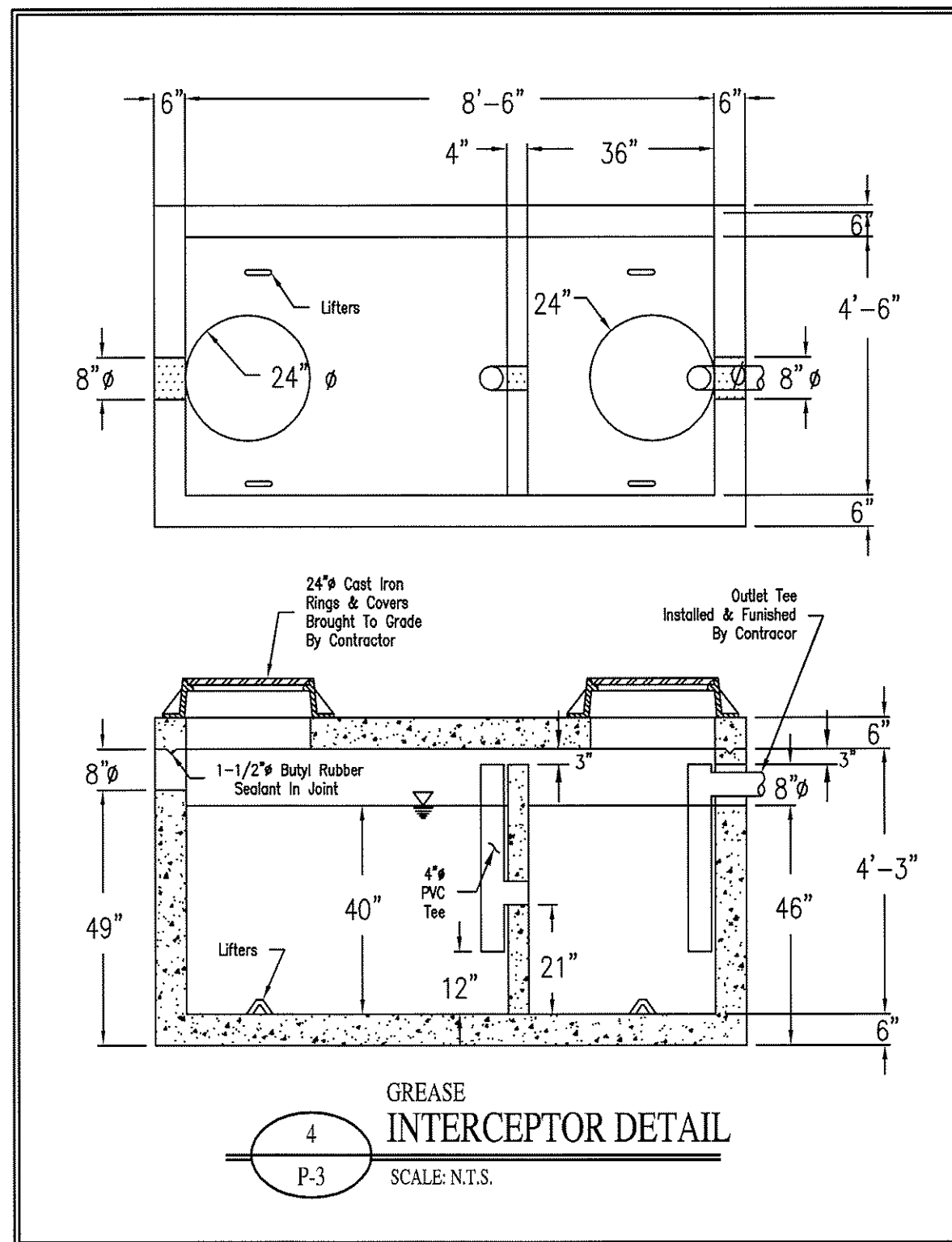
content
RETAIL SHOPS
PLUMBING
NOTES & DETAILS

FOR CONSTRUCTION
sheet

P-3

PLUMBING NOTES:

- PLUMBING TO BE INSTALLED IN ACCORDANCE WITH ALL STATE AND LOCAL CODES.
- PLUMBING CONTRACTOR TO COORDINATE ALL WORK WITH OTHER TRADES.
- ALL WASTE AND VENT PIPING TO BE SCHEDULE 40 P.V.C.
- WATER LINES TO BE COPPER TYPE K (SOFT DRAWN) BELOW SLAB, AND TYPE L HARD COPPER ABOVE SLAB.
- ALL P.V.C. UNDER SLAB SHALL BE A MINIMUM OF 2" NPS.
- COPPER PIPING TO BE INSULATED WHERE IT PASSES THROUGH CONCRETE.
- BACKFLOW PREVENTER ASSEMBLY (BPPA) TO BE LOCATED IN HOT BOX, SEE SITE UTILITY PLAN FOR LOCATION. INSTALL EXPANSION TANK OR THERMAL EXPANSION VALVE UPSTREAM OF WATER HEATER.
- PLUMBING CONTRACTOR SHALL (OR HAVE LOCAL MUNICIPALITY) PERFORM A WATER PRESSURE TEST. IF RESIDUAL WATER PRESSURE IS MORE THAN 60 PSI OR LESS THAN 35 PSI, CONTACT ENGINEER TO ASSESS NEED FOR A PRESSURE REDUCING VALVE (PRV) OR A PRESSURE BOOSTER SYSTEM.
- INSULATE HOT & COLD WATER LINES IN ACCORDANCE WITH BUILDING CODE. INSULATE COLD WATER LINES WHERE SWEATING WOULD RESULT IN STRUCTURAL DAMAGE TO BUILDING DUE TO ROTTING OF WOOD OR STAINING OF CEILING TILES.
- LAVATORIES ARE TO BE EQUIPPED WITH CLEAN-OUT TEES BELOW.
- ALL FIXTURES ARE TO BE EQUIPPED WITH SHUT-OFF VALVES ON SUPPLY LINES.
- THE CONTRACTOR SHALL COORDINATE THE LOCATION OF ALL PIPING AND EQUIPMENT WITH ALL OTHER TRADES PRIOR TO BEGINNING INSTALLATION TO AVOID CONFLICTS AND INTERFERENCE WITH OTHER TRADES.
- FINAL UTILITY CONNECTIONS (GAS, ELECTRIC, WATER ETC.) TO EQUIPMENT SHALL BE MADE BY THE CONTRACTOR INSTALLING THE EQUIPMENT REQUIRING THE UTILITIES.
- PLANS AND ISOMETRICS ARE DIAGRAMMATIC. THERE IS NO INTENT TO INDICATE ALL AND FITTINGS REQUIRED. GENERALLY, PIPING SHALL BE INSTALLED PARALLEL OR PERPENDICULAR TO AND PLUMB WITH WALL CONSTRUCTION.
- SOIL AND WASTE PIPING SHALL BE LAID ON MINIMUM 1/4" PER FT. SLOPE FOR PIPE SIZES LESS THAN 3", AND MINIMUM 1/8" PER FT. FOR PIPE 3" AND LARGER UNLESS OTHERWISE NOTED.
- UNLESS OTHERWISE NOTED, PLUMBING CONTRACT SHALL TERMINATE AT A POINT FIVE (5) FEET OUTSIDE THE BUILDING. FOR WORK BY OTHER CONTRACTORS OUTSIDE THE 5 FOOT TERMINATION, REFER TO SITE UTILITY DRAWINGS.
- VALVES AND DEVICES INSIDE CHASES OR WALLS OR ABOVE NON-ACCESSIBLE CEILINGS SHALL BE PROVIDED WITH APPROPRIATELY SIZED ACCESS PANEL COMPATIBLE WITH SURROUNDING FINISHES. SUCH ACCESS PANELS SHALL BE FURNISHED BY THE PLUMBING CONTRACTOR FOR INSTALLATION BY THE GENERAL CONTRACTOR.
- PLUMBING VENT PIPING PENETRATING ROOF SHALL BE INSTALLED BY THE PLUMBING CONTRACTOR. CUTTING OF HOLES AND FLASHING OF PENETRATIONS SHALL BE BY THE GENERAL CONTRACTOR.
- REFER TO ARCHITECTURAL DRAWINGS FOR DIMENSIONED LOCATIONS OF WALLS AND PARTITIONS AND FOR PARTITION THICKNESS AND CONSTRUCTION MATERIALS.



MINIMUM FACILITIES CALCULATIONS

OCCUPANCY CLASSIFICATION (PER TABLE 403.1)	SQUARE FOOTAGE	SQ. FT. PER OCCUPANT (PER TABLE 1004.1.2)	CALCULATED # OF PEOPLE	DIVISION OF FACILITIES (PER 403.3)		FIXTURES REQUIRED PER TABLE 403.1											
				MEN	WOMEN	FIXTURES PROVIDED					FIXTURES PROVIDED						
						WATER CLOSETS UNISEX	LAVATORIES UNISEX	URINALS	SHOWERS/TUBS	DRINKING FOUNTAINS REGULAR ACCESSIBLE	WATER CLOSETS UNISEX	LAVATORIES UNISEX	URINALS	SHOWERS/TUBS	DRINKING FOUNTAINS REGULAR ACCESSIBLE		
MERCENTILE (SHOPS G-E)	1,554	30 GROSS	52	26 (50%)	26 (50%)	*1	*1	-	-	1	1	*1	*1	-	-	1	1
MERCENTILE (SHOPS A-C)	1,337	30 GROSS	46	23 (50%)	23 (50%)	*1	*1	-	-	1	1	*1	*1	-	-	1	1

* PER SECTION 403.2, EXCEPTION 4 OF THE N.C. PLUMBING CODE, ONE LOCKABLE TOILET ROOM IS ACCEPTABLE.

PLUMBING FIXTURE SCHEDULE

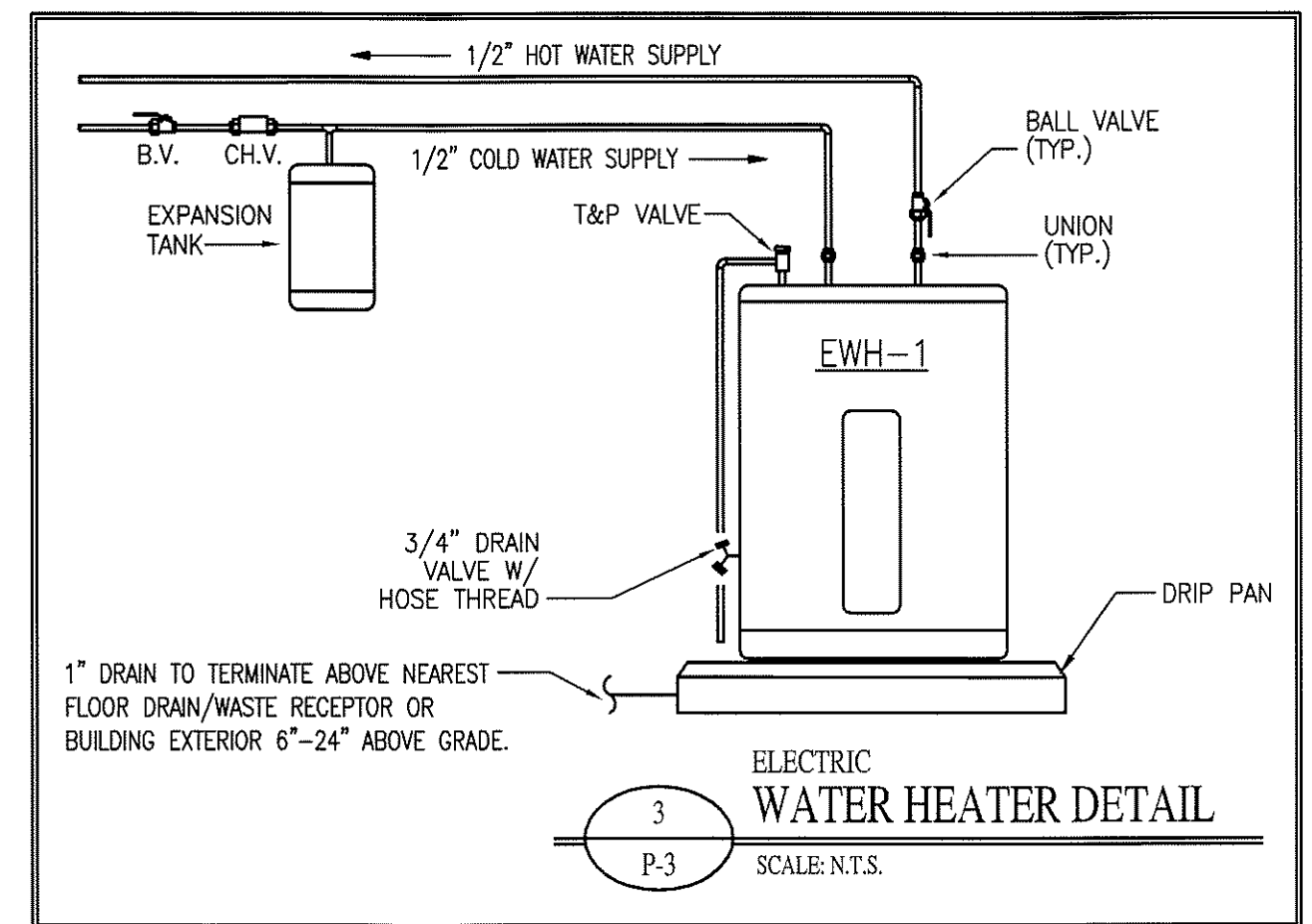
ITEM NO.	FIXTURE DESCRIPTION	MANUFACTURER	* MODEL NO.	CONNECTION SIZES				REMARKS
				C.W.	H.W.	WASTE	VENT	
EW-C-1	ELECTRIC WATER COOLER - BI-LEVEL	SUNROC	ADA08BL	1/2"	---	1-1/2"	1-1/2"	BI-LEVEL WATER COOLER
WC-1	WATER CLOSET - TANK TYPE	AMER. STD.	2998.012	1/2"	---	4"	2"	FLOOR MTD. 1.6 GAL/FLUSH, H.C. HEIGHT
LV-1	WALL HUNG LAVATORY	AMER. STD.	0355.012	1/2"	1/2"	1-1/2"	1-1/2"	SINGLE LEVER FAUCET, TRUEBRO PIPING COVERS

* FIXTURE MODEL NUMBERS LISTED ARE FOR DESCRIPTION ONLY.

WASTE AND WATER CALCULATIONS

FIXTURE TYPE	QUANTITY	WASTE FIXTURE UNITS		HOT WATER FIXTURE UNITS		COLD WATER FIXTURE UNITS		TOTAL WATER FIXTURE UNITS	
		PER UNIT	TOTAL	PER UNIT	TOTAL	PER UNIT	TOTAL	PER UNIT	TOTAL
WATER CLOSET - TANK	1	4	4	0	---	5	5	5	5
LAVATORY	1	1	1	1.5	1.5	1.5	1.5	2	2
DRINKING FOUNTAIN	2	0.5	1	0	---	0.25	0.5	0.25	0.5
TOTAL			6		1.5		7		7.5

1. 4" WASTE LINE SLOPED AT 1/8" PER 1'-0" IS ADEQUATE FOR 180 FIXTURE UNITS
2. 1" WATER LINE IS ADEQUATE FOR 23 GPM. GPM = 12.3



WATER HEATER SCHEDULE

MARK	TANK VOLUME	RECOVERY	TEMPERATURE RISE	ELEMENT SIZE	POWER	MANUFACTURER	MODEL
EW-H-1	6 GAL.	8 GPH	100°	2 KW	120V/1Ø	RHEEM	81VP6S